

SEC 19 T2N R11W

BM#44 2" ALUM. CAP  
END OF OVERPASS I-44  
EL. 1144.60

SEE SHEET  
47 FOR RAMP D-E  
PROFILE

SEE SHEET  
44 FOR RAMP D  
PROFILE

SEE SHEETS  
26 - 33 FOR  
GEOMETRIC DATA

SEE SHEET  
45 FOR RAMP E  
PROFILE

55+00  
STA. 62+97.73 143.39 RT. 144  
CDL 3725125' TOP CL. 1134.26  
E. ELEV. = 131.87  
E. 18" RCP - 1132.01  
STA. 64+44.61 102.85 RT. 144  
CDL 22251512'  
TOP GRADE = 1130.66  
E. ELEV. = 128.93  
E. 18" RCP - 1128.17  
STA. 64+63.46 144  
E. 45° 22' 24.43" RCB \* 1" ING &  
16.38 LT. 16.23 RT. 10 PI  
E. ELEV. = 1126.96 LT. & 1126.96 RT.  
STA. 64+80.83 140.73 RT. 144  
47° 12' 18.49" RCB  
E. ELEV. = 1125.83 RT.

BM#43 CHISELED SQUARE  
S.E. COR. S. HDWL  
STA. 396+43, 27' RT.  
EL. 1134.97

SEE SHEETS  
65 - 69 FOR  
PAVEMENT DETAILS

SEC 18 T2N R11W

BM#45 TOP OF STEM. H.A.R.N. MON.  
"TWO" & ODOT MON. NO. C-16-1081  
= BM#3 SWO 3748(1) I-44  
STA. 70+72, 192' LT.  
EL. 1140.31

LEGEND

- PROPOSED PAVEMENT
- PROPOSED RAISED MEDIAN
- DRAINAGE STRUCTURE

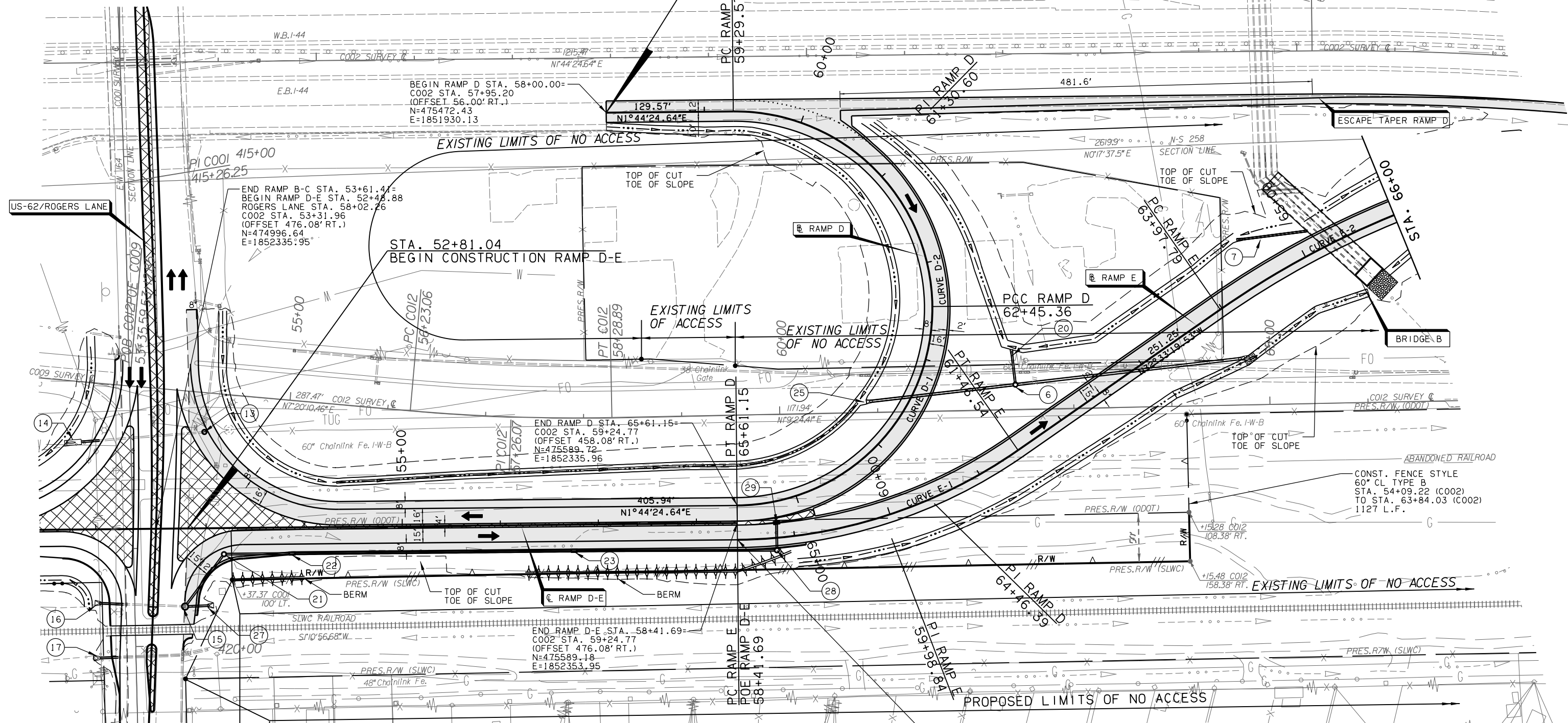
OKLAHOMA DEPARTMENT OF TRANSPORTATION

FED. ROAD DIST. NO.	STATE	JOB PIECE NO.	FISCAL YEAR	SHEET NO.	TOTAL SHEETS
6	OKLA.	27050(04)	2017		

REVISIONS

DESCRIPTION	DATE
-------------	------

0 50 100 150  
SCALE



LATITUDE/LONGITUDE	OCC FACILITY NO./OCC CASE NO.	FACILITY
34.6394, -98.3870	1621780/064-3324	FORMER GAS STATIONS (2)

PETROLEUM CONTAMINATION MAY EXIST AT OR NEAR THE REFERENCED LEAKING UNDERGROUND STORAGE TANK (LUST) SITE. BASED ON THE AVAILABLE INFORMATION, CONTAMINATION IS NOT EXPECTED TO AFFECT CONSTRUCTION ACTIVITIES, BUT IS STILL POSSIBLE. IN THE EVENT CONTAMINATED SOIL OR GROUNDWATER IS ENCOUNTERED, THE CONTRACTOR SHALL ADHERE TO ODOT'S HAZARDOUS MATERIALS SPECIFICATION 107.15 AND NOTIFY THE RESIDENT ENGINEER, WHO MAY THEN CONTACT THE ENVIRONMENTAL PROGRAMS DIVISION AT (405) 521-3026 FOR ASSISTANCE.

BEGIN RAMP E STA. 58+41.69=  
CO02 STA. 59+24.77  
(OFFSET 493.08' RT.)  
N=475588.66  
E=1852370.94

DESIGN	AKS	6/12	1-44 & US-62 INTERCHANGE
DRAWN	BWH	6/12	
CHECKED	JES	5/16	
APPROVED			
SQUAD	<b>GARVER</b>	STATE JOB NO. 27050(04)	SHEET NO. 37

PLAN SHEET  
(SHEET 4 OF 7)